

Model: ZDADJ1722-12-120

VPol 1710 `2170MHz 120° 12dBi Sector Panel Antenna

Frequency Range-MHz1710;«2170

Gain-dBi12

PolarizationVertical

Electrical downtilt-ã0

Half-power Beam widthHor:120;ver:15

Front to Back ratio-dBÝ21

Intermediation IM3-dBm<-107

Input impedance• 50

VSWRÛ1.5

Maximum Input power-W300

Lightning ProtectionDC Ground

ConnectorN-F/7/16DIN-F

Size-mm570*180*80

Weight-kg3.2

Wind Loading Area-m/s60

Radiating Element MaterialCu Ag

Radome MaterialASA

Mounting hardware-mmø35;«ø50

Operating temperature-ã-40;«60



Model: ZDADJ1722-14-65

VPol 1710 2170MHz 65° 14dBi Sector Panel Antenna

Frequency Range-MHz1710;«2170

Gain-dBi14

PolarizationVertical

Electrical downtilt-ã0

Half-power Beam widthHor:65;Ver:17

Front to Back ratio-dBÝ28

Intermediation IM3-dBm<-107

Input impedance-• 50

VSWRÜ1.5

Maximum Input power-W250

Lightning ProtectionDC Ground

Connector2*7/16DIN-F

Size-mm580*180*80

Weight-kg6

Wind Loading Area-m/s60

Radiating Element MaterialCu Ag

Radome MaterialASA

Mounting hardware-mmø35;«ø50

Operating temperature-ja-40;«60



Model: ZDADJ1722-14-90

VPol 1710 2170MHz 90° 14dBi Sector Panel Antenna

Frequency Range-MHz1710;«2170

Gain-dBi14

PolarizationVertical

Electrical downtilt-ã0

Half-power Beam widthHor:90;Ver:15

Front to Back ratio-dBÝ23

Intermediation IM3-dBm<-107

Input impedance-• 50

VSWRÛ1.5

Maximum Input power-W300

Lightning ProtectionDC Ground

ConnectorN-F/7/16DIN-F

Size-mm570*180*80

Weight-kg3.2

Wind Loading Area-m/s60

Radiating Element MaterialCu Ag

Radome MaterialASA

Mounting hardware-mmø35;«ø50

Operating temperature-ja-40;«60



Model: ZDADJ1722-15-120

VPol 1710 `2170MHz 120° 15dBi Sector Panel Antenna

Frequency Range-MHz1710j«2170

Gain-dBi15

PolarizationVertical

Electrical downtilt-jã0

Half-power Beam widthHor:120;Ver:8

Front to Back ratio-dBjY21

Intermediation IM3-dBm<-107

Input impedance-• 50

VSWRjÜ1.5

Maximum Input power-W300

Lightning ProtectionDC Ground

ConnectorN-F/7/16DIN-F

Size-mm1070*180*80

Weight-kg4.5

Wind Loading Area-m/s60

Radiating Element MaterialCu Ag

Radome MaterialASA

Mounting hardware-mmø35j«ø50

Operating temperature-jæ-40j«60



Model: ZDADJ1722-16-90

VPol 1710 2170MHz 90° 16dBi Sector Panel Antenna

Frequency Range-MHz1710;«2170

Gain-dBi16

PolarizationVertical

Electrical downtilt-ã0

Half-power Beam widthHor:90;Ver:8

Front to Back ratio-dBÝ23

Intermediation IM3-dBm<-107

Input impedance-• 50

VSWRÜ1.5

Maximum Input power-W300

Lightning ProtectionDC Ground

ConnectorN-F/7/16DIN-F

Size-mm1070*180*80

Weight-kg4.5

Wind Loading Area-m/s60

Radiating Element MaterialCu Ag

Radome MaterialASA

Mounting hardware-mmø35;«ø50

Operating temperature-ã-40;«60



Model: ZDADJ1722-17-65

VPol 1710 2170MHz 65° 17dBi Sector Panel Antenna

Frequency Range-MHz1710;«2170

Gain-dBi17

PolarizationVertical

Electrical downtilt-ã0

Half-power Beam widthHor:65;Ver:8

Front to Back ratio-dBÝ25

Intermediation IM3-dBm<-107

Input impedance-• 50

VSWRÛ1.5

Maximum Input power-W300

Lightning ProtectionDC Ground

ConnectorN-F/7/16DIN-F

Size-mm1070*180*80

Weight-kg4.5

Wind Loading Area-m/s60

Radiating Element MaterialCu Ag

Radome MaterialASA

Mounting hardware-mmø35;«ø50

Operating temperature-;æ-40;«60



Model: ZDADJ1722-17-90

VPol 1710 2170MHz 90° 17dBi Sector Panel Antenna

Frequency Range-MHz1710;«2170

Gain-dBi17

PolarizationVertical

Electrical downtilt-ã0

Half-power Beam widthHor:90;Ver:6.5

Front to Back ratio-dBÝ23

Intermediation IM3-dBm<-107

Input impedance-• 50

VSWRÛ1.5

Maximum Input power-W300

Lightning ProtectionDC Ground

ConnectorN-F/7/16DIN-F

Size-mm1320*180*80

Weight-kg5

Wind Loading Area-m/s60

Radiating Element MaterialCu Ag

Radome MaterialASA

Mounting hardware-mmø35;«ø50

Operating temperature-ã-40;«60



Model: ZDADJ1722-18-65

VPol 1710 2170MHz 65° 18dBi Sector Panel Antenna

Frequency Range-MHz1710;«2170

Gain-dBi18

PolarizationVertical

Electrical downtilt-ã0

Half-power Beam widthHor:65;Ver:6.5

Front to Back ratio-dBÝ25

Intermediation IM3-dBm<-107

Input impedance• 50

VSWRÛ1.5

Maximum Input power-W300

Lightning ProtectionDC Ground

ConnectorN-F/7/16DIN-F

Size-mm1320*180*80

Weight-kg5

Wind Loading Area-m/s60

Radiating Element MaterialCu Ag

Radome MaterialASA

Mounting hardware-mmø35;«ø50

Operating temperature-ã-40;«60



Model: ZDADJ1722A-15-65

VPol 1710 2170MHz 65° 15dBi Sector Panel Antenna

Frequency Range-MHz1710;«2170

Gain-dBi15

PolarizationVertical

Electrical downtilt-ã0

Half-power Beam widthHor:65;Ver:15

Front to Back ratio-dBÝ25

Intermediation IM3-dBm<-107

Input impedance-• 50

VSWRÛ1.5

Maximum Input power-W300

Lightning ProtectionDC Ground

ConnectorN-F/7/16DIN-F

Size-mm570*180*80

Weight-kg3.2

Wind Loading Area-m/s60

Radiating Element MaterialCu Ag

Radome MaterialASA

Mounting hardware-mmø35;«ø50

Operating temperature-ã-40;«60



Model: ZDADJ1722B-15-65

VPol 1710 `2170MHz 65° 15dBi Sector Panel Antenna

Frequency Range-MHz1710j«2170

Gain-dBi15

PolarizationVertical

Electrical downtilt-jã0

Half-power Beam widthHor:65;Ver:15

Front to Back ratio-dBjY25

Intermediation IM3-dBm<-107

Input impedance-• 50

VSWRjÜ1.5

Maximum Input power-W300

Lightning ProtectionDC Ground

ConnectorN-F/7/16DIN-F

Size-mm860*180*80

Weight-kg3.2

Wind Loading Area-m/s60

Radiating Element MaterialCu Ag

Radome MaterialASA

Mounting hardware-mmø35j«ø50

Operating temperature-jæ-40j«60



Model: ZDADJ1922-12YG

VPol 1920 ~2170MHz 45° 12dBi Yagi Antenna

Frequency Range-MHz1920~2170

Gain-dBi12

PolarizationVertical

Electrical downtilt-°0

Half-power Beam widthHor:45;Ver:46

VSWR≤1.5

Front to Back ratio-dB≥15

Input impedance• 50

Maximum Input power-W100

Lightning ProtectionDC Ground

ConnectorN-C-K5

Size-mm460

Cable length-mm380

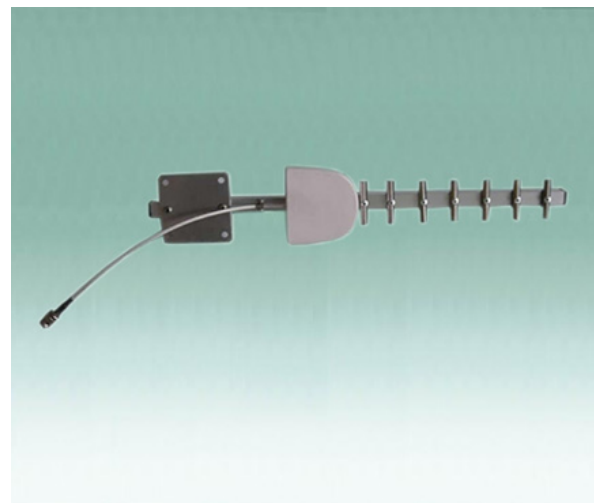
Weight-kg0.317

Wind Loading Area-m/s60

The unit counting9

Mounting hardware-mm∅35~∅50

Operating temperature-°C-40~60



Model: ZDAQJ1922-11

VPol 1920 ~2170MHz 11dBi Omni-directional Antenna

Frequency Range-MHz1920~2170

Gain-dBi11

PolarizationVertical

Electrical downtilt-°0

Half-power Beam widthVer:7

Input impedance• 50

VSWR≤1.5

Maximum Input power-W150

Lightning ProtectionDC Ground

ConnectorN-F

Size-mm1200

Weight-kg1.1

Wind Loading Area-m/s60

Radiating Element MaterialCu Ag

Radome MaterialFiberglass

Mounting hardware-mm∅35~∅50

Operating temperature-°C-40~60



Model: ZDAQJ1922-9

VPol 1920 ~2170MHz 9dBi Omni-directional Antenna

Frequency Range-MHz1920;«2170

Gain-dBi9

PolarizationVertical

Electrical downtilt-ã0

Half-power Beam widthVer:12

Input impedance-• 50

VSWR;Ü1.5

Maximum Input power-W150

Lightning ProtectionDC Ground

ConnectorN-F

Size-mm1000

Weight-kg1

Wind Loading Area-m/s60

Radiating Element MaterialCu Ag

Radome MaterialFiberglass

Mounting hardware-mmø35;«ø50

Operating temperature-;æ-40;«60

