

Model: ZDADJ5658K-15-120 / ZDADJ5658L-17-90 / ZDADJ5658T-18-60 / ZDADJ5658B-19-45

VPOI5605;«5850MHz 120/90/60/45° 15/17/18/19dBi Sector Panel Antenna



Main Features:

Specially designed for 5.6 to 5.8GHz broadband communications system
Firm structure, Waterproof
High gain, Low VSWR
Good appearance, Easy to mount

Electrical Specifications

Frequency Range-MHz5605 ~5850
Gain-dBi15/17/18/19
PolarizationVertical
Electrical downtilt-°0
Half-power Beam widthHor: 120/90/60/45; Ver: 7
Front to Back ratio-dB;¥23
VSWR;Ü1.4
Input impedance-• 50
Maximum Input power-W100
Lightning ProtectionDC Ground

Mechanical Specifications

ConnectorN-F
Size-mm378*114*54
Weight-kg1.8
Wind Loading Area-m/s60
Radiating Element MaterialAluminum Alloy
Radome MaterialPVC
Mounting hardware-mmø30 `ø70
Operating temperature-;æ-40 `60

Model: ZDADJ5800A-15-90

VPol5725; «5875MHz 90° 15dBi Sector Panel Antenna

Frequency Range-MHz5725; «5875

Gain-dBi15

PolarizationVertical

Electrical downtilt-ã0

Half-power Beam widthHor:90;Ver:10.5

Front to Back ratio-dBÝ23

VSWRÜ1.4

Input impedance-• 50

Maximum Input power-W100

Lightning ProtectionDC Ground

ConnectorN-F

Size-mm403*135*28

Weight-kg1.5

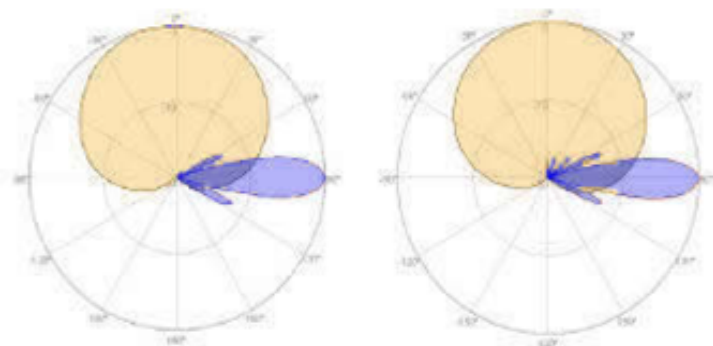
Wind Loading Area-m/s60

Radiating Element MaterialAluminum Alloy

Radome MaterialABS

Mounting hardware-mmø30; «ø70

Operating temperature-ã-40; «60



3300MHz

3800MHz

Model: ZDADJ5158K-15-120 / ZDADJ5158L-17-90 / ZDADJ5158T-18-60 / ZDADJ5158B-19-45

VPol5150;«5850MHz 120/90/60/45° 15/17/18/19dBi Sector Panel Antenna



Main Features:

Specially designed for 5.1 to 5.8GHz broadband communications system

Firm structure, Waterproof

High gain, Low VSWR

Good appearance, Easy to mount

Electrical Specifications

Frequency Range-MHz 5150 ~ 5850

Gain-dBi 15/17/18/19

Polarization Vertical

Electrical downtilt-° 0

Half-power Beam width Hor: 120/90/60/45; Ver: 7

Front to Back ratio-dB ≥ 23

VSWR ≤ 1.4

Input impedance-• 50

Maximum Input power-W 100

Lightning Protection DC Ground

Mechanical Specifications

Connector N-F

Size-mm 378*114*54

Weight-kg 1.8

Wind Loading Area-m/s 60

Radiating Element Material Aluminum Alloy

Radome Material PVC

Mounting hardware-mm ∅30 ~ ∅70

Operating temperature-ïæ-40 ~ 60

Model: ZDADJ5800A-17-65

VPO15100; «5900MHz 65° 17dBi Sector Panel Antenna

Frequency Range-MHz5100; «5900

Gain-dBi17

PolarizationVertical

Electrical downtilt-ı̂0

Half-power Beam widthHor:65;Ver:7

VSWRı̇1.5

Input impedance• 50

Maximum Input power-W100

Lightning ProtectionDC Ground

Frequency Range-MHz5100; «5900

ConnectorN-F

Size-mm378*114*54

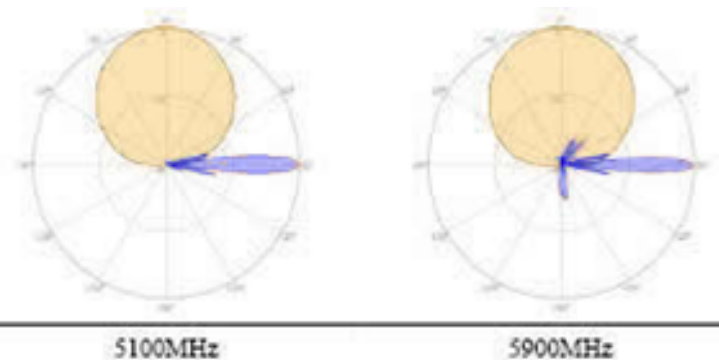
Weight-kg1.8

Wind Loading Area-m/s60

Radome MaterialFiberglass

Mounting hardware-mmø30; «ø70

Operating temperature-ı̂æ-40; «60



Model: ZDADJ5800A-19-14

VPol5725;«5875MHz 14° 19dBi Sector Panel Antenna

Frequency Range-MHz5725;«5875

Gain-dBi19

PolarizationVertical

Electrical downtilt-ã0

Half-power Beam widthHor:14;Ver:15

Front to Back ratio-dBÝ27

VSWRÜ1.5

Input impedance-• 50

Maximum Input power-W100

Lightning ProtectionDC Ground

ConnectorN-F

Size-mm200*200*30

Weight-kg1.2

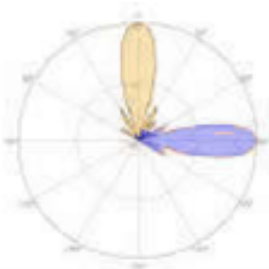
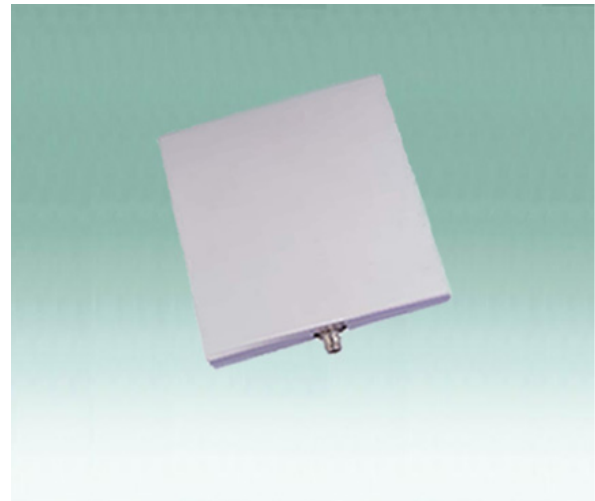
Wind Loading Area-m/s60

Radiating Element MaterialAluminum Alloy

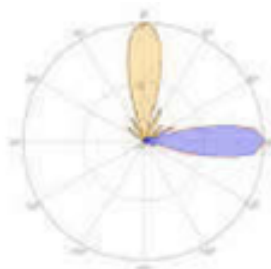
Radome MaterialUV PVC

Mounting hardware-mmø30;«ø70

Operating temperature-ã-40;«60



5725MHz



5875MHz

Model: ZDADJ5800D-17-60

VPol5725;«5875MHz 60° 17dBi Sector Panel Antenna

Frequency Range-MHz5725;«5875

Gain-dBi17

Polarization;Ä45;ã

Electrical downtilt-;ã0

Half-power Beam widthHor:60;Ver:5.5

Front to Back ratio-dB;Ý27

VSWR;Ü1.5

Input impedance-• 50

Maximum Input power-W100

Lightning ProtectionDC Ground

ConnectorN-F

Size-mm466*114*54

Weight-kg1.8

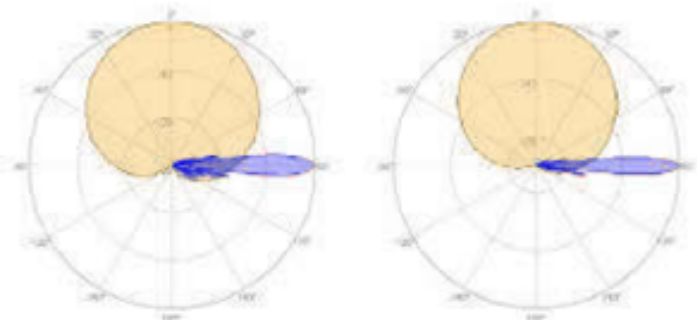
Wind Loading Area-m/s60

Radiating Element MaterialAluminum Alloy

Radome MaterialUV PVC

Mounting hardware-mmø30;«ø70

Operating temperature-;æ-40;«60



5725MHz

5875MHz

Model: ZDADJ5800D-18-60

VPol5725;«5875MHz 60° 18dBi Sector Panel Antenna

Frequency Range-MHz5725;«5875

Gain-dBi18

PolarizationVertical

Electrical downtilt-ıã0

Half-power Beam widthHor:60;Ver:5

Front to Back ratio-dBıY25

VSWRıÜ1.5

Input impedance-• 50

Maximum Input power-W100

Lightning ProtectionDC Ground

ConnectorN-F

Size-mm370*170*65

Weight-kg1.8

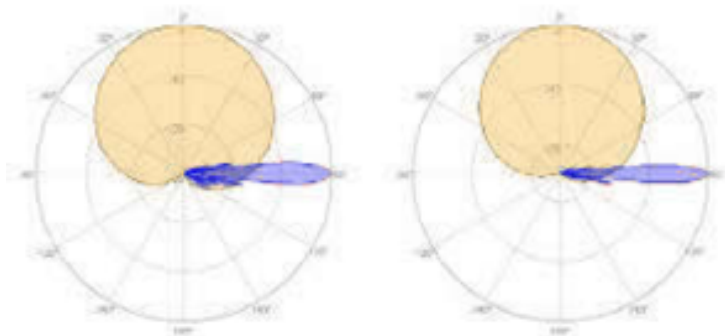
Wind Loading Area-m/s60

Radiating Element MaterialAluminum Alloy

Radome MaterialUV PVC

Mounting hardware-mmø30;«ø70

Operating temperature-ıæ-40;«60



5725MHz

5875MHz

Model: ZDAPW5800AL-30-4

H/VPol 5725-5850MHz 4° 30dBi Parabolic Antenna

Frequency Range-MHz5725-5850

Gain-dBi30

Bandwidth125

PolarizationHorizontal/Vertical

Half-power Beam widthHor:4;Ver:6

Front to Back ratio-dB≥25

VSWR≤1.5

Input impedance-• 50

Maximum Input power-W100

Lightning ProtectionDC Ground

ConnectorN-F

Size-mm600*900

Weight-kg4.5

Wind Loading Area-m/s60

Antennas MaterialDie Cast Aluminum Alloy

Operating temperature-;æø40;«ø50



Model: ZDAPW5800FE-24-9

H/VPol 5725;«5850MHz 9° 24dBi Parabolic Antenna

Frequency Range-MHz5725;«5850

Gain-dBi24

Bandwidth125

PolarizationHorizontal/Vertical

Half-power Beam widthHor:9;Ver:12

Front to Back ratio-dBÝ20

VSWRÜ1.5

Input impedance-• 50

Maximum Input power-W100

Lightning ProtectionDC Ground

ConnectorN-F

Size-mm300*400

Weight-kg1.6

Wind Loading Area-m/s60

antennas MaterialWelding Stainless steel

Operating temperature-jæø40;«ø50



Model: ZDAPW5800FE-27-6

H/VPol 5725;«5850MHz 6° 27dBi Parabolic Antenna

Frequency Range-MHz5725;«5850

Gain-dBi27

Bandwidth125

PolarizationHorizontal/Vertical

Half-power Beam widthHor:6;Ver:9

Front to Back ratio-dBÝ20

VSWRÜ1.5

Input impedance-• 50

Maximum Input power-W100

Lightning ProtectionDC Ground

ConnectorN-F

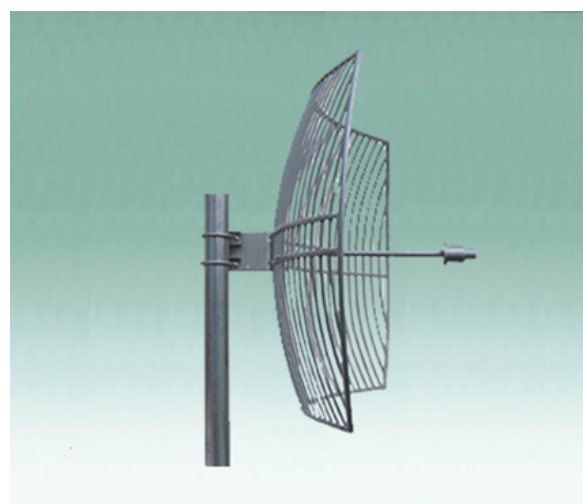
Size-mm400*600

Weight-kg2.7

Wind Loading Area-m/s60

Antennas MaterialWelding Stainless steel

Operating temperature-jæø40;«ø50



Model: ZDAPW5800FE-30-4

H/VPol 5725;«5850MHz 4° 30dBi Parabolic Antenna

Frequency Range-MHz5725;«5850

Gain-dBi30

Bandwidth125

PolarizationHorizontal/Vertical

Half-power Beam widthHor:4;Ver:6

Front to Back ratio-dBÝ25

VSWRÜ1.5

Input impedance-• 50

Maximum Input power-W100

Lightning ProtectionDC Ground

ConnectorN-F

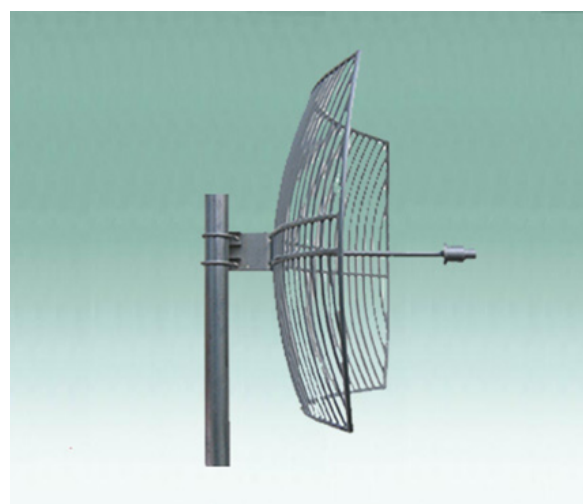
Size-mm600*900

Weight-kg5.2

Wind Loading Area-m/s60

Antennas MaterialWelding Stainless steel

Operating temperature-jæø40;«ø50



Model: ZDAQJ5800-08

VPol 5725~5875MHz 360° 8dBi Omni-directional Antenna

Frequency Range-MHz5725~5875

Gain-dBi8

PolarizationVertical

Electrical downtilt-°0

Half-power Beam widthHor:360;Ver:16

VSWR≤1.5

Input impedance• 50

Maximum Input power-W100

Lightning ProtectionDC Ground

ConnectorN-F

Size-mm350* ϕ 20

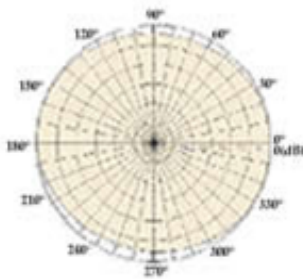
Weight-kg0.8

Wind Loading Area-m/s60

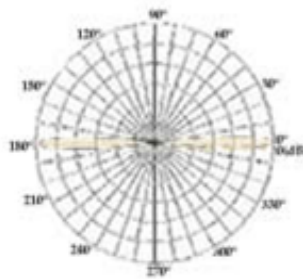
Radome MaterialFiberglass

Mounting hardware-mm ϕ 20~ ϕ 50

Operating temperature-°C-40~60



水平面方向图
Horizontal pattern



垂直面方向图
Vertical pattern

Model: ZDAQJ5800-10

VPol 5725~5875MHz 360° 10dBi Omni-directional Antenna

Frequency Range-MHz5725~5875

Gain-dBi10

PolarizationVertical

Electrical downtilt-°0

Half-power Beam widthHor:360;Ver:10

VSWR≤1.5

Input impedance• 50

Maximum Input power-W100

Lightning ProtectionDC Ground

ConnectorN-F

Size-mm400* ϕ 20

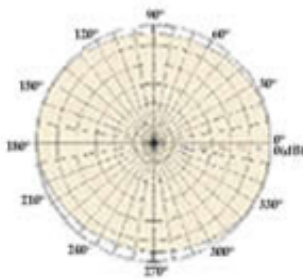
Weight-kg0.8

Wind Loading Area-m/s60

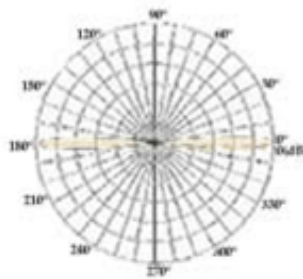
Radome MaterialFiberglass

Mounting hardware-mm ϕ 22~ ϕ 55

Operating temperature-°C-40~60



水平面方向图
Horizontal pattern



垂直面方向图
Vertical pattern

Model: ZDAQJ5800-11

VPol 5725~5875MHz 360° 11dBi Omni-directional Antenna

Frequency Range-MHz5725~5875

Gain-dBi11

PolarizationVertical

Electrical downtilt-°0

Half-power Beam widthHor:360;Ver:8.5

VSWR≤1.4

Input impedance• 50

Maximum Input power-W100

Lightning ProtectionDC Ground

ConnectorN-F

Size-mm500* ϕ 20

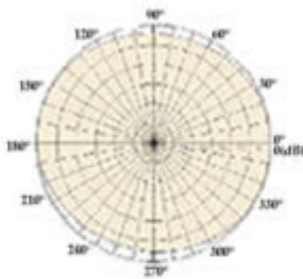
Weight-kg1

Wind Loading Area-m/s60

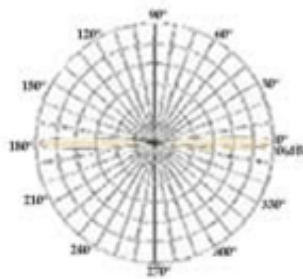
Radome MaterialFiberglass

Mounting hardware-mm ϕ 20~ ϕ 55

Operating temperature-°C-40~60



水平面方向图
Horizontal pattern



垂直面方向图
Vertical pattern

Model: ZDAQJ5800-12

VPol 5725~5875MHz 360° 11dBi Omni-directional Antenna

Frequency Range-MHz5725~5875

Gain-dBi11

PolarizationVertical

Half-power Beam width0

Front to Back ratio-dBHor:360;Ver:7

VSWR≤1.4

Input impedance• 50

Maximum Input power-W100

Lightning ProtectionDC Ground

ConnectorN-F

Size-mm540*φ20

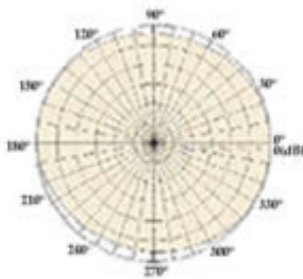
Weight-kg1

Wind Loading Area-m/s60

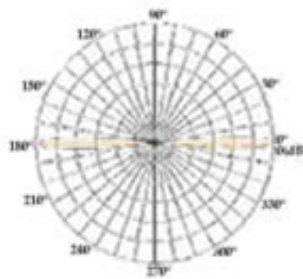
Radome MaterialFiberglass

Mounting hardware-mmφ20~φ55

Operating temperature-°C-40~60



水平面方向图
Horizontal pattern



垂直面方向图
Vertical pattern